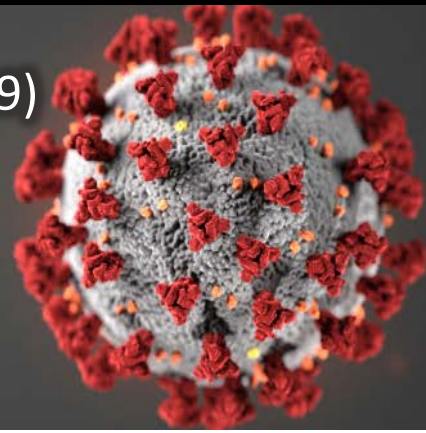


Coronavirus Disease 2019 (COVID-19)

Fayette County Public Health

Epidemiological Update

October 14, 2020

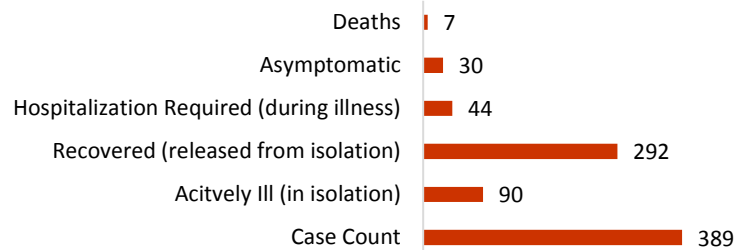


Community Cases		389
Rate per 100,000 Residents		1,340
Confirmed Cases		354
Probable Cases		35
Antibody Testing*		1
Antigen Testing*		22
Long-Term Care Facilities Cases		18
Median Age (Years)		48.0
Average Age (Years)		47.8
Minimum Age (Years)		1
Maximum Age (Years)		95
Range of Illness Onset Dates	February 12, 2020 – October 12, 2020	
<small>*This only includes antibody or antigen testing that has been authorized by the FDA under an emergency use authorization for use by authorized laboratories</small>		

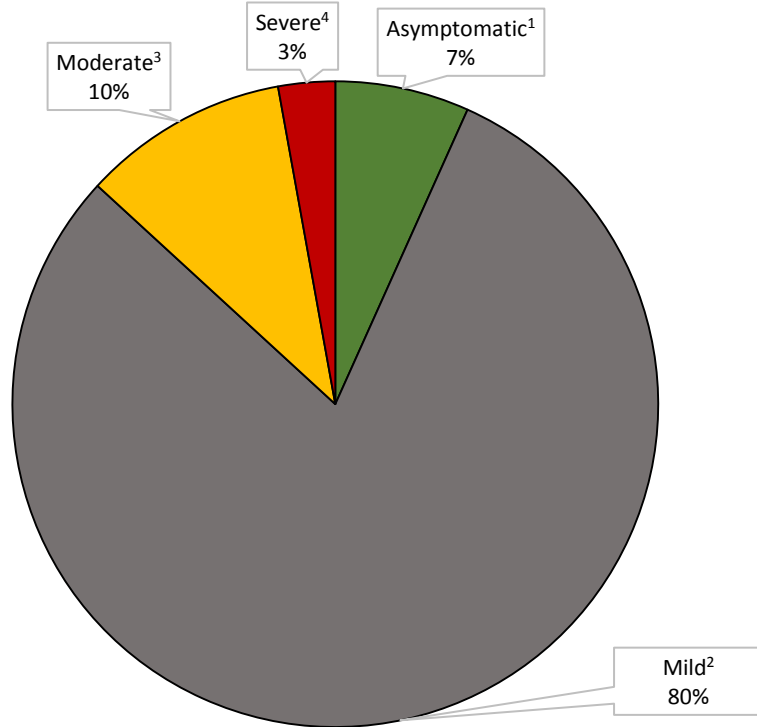
Sex of Cases:



Health Status of Cases:



Severity of Illness Among COVID-19 Cases Reported in Fayette County



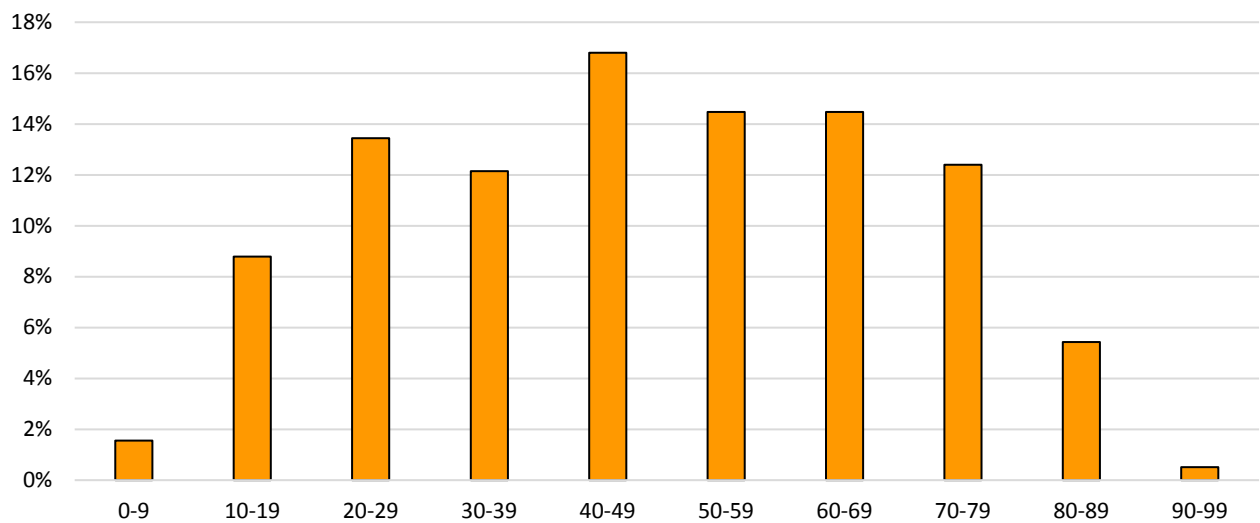
¹ Asymptomatic cases are those who do not report having any symptoms but have a positive test result

² Mild illness includes cases who were able to recover at home

³ Moderate illness includes cases who required hospitalization

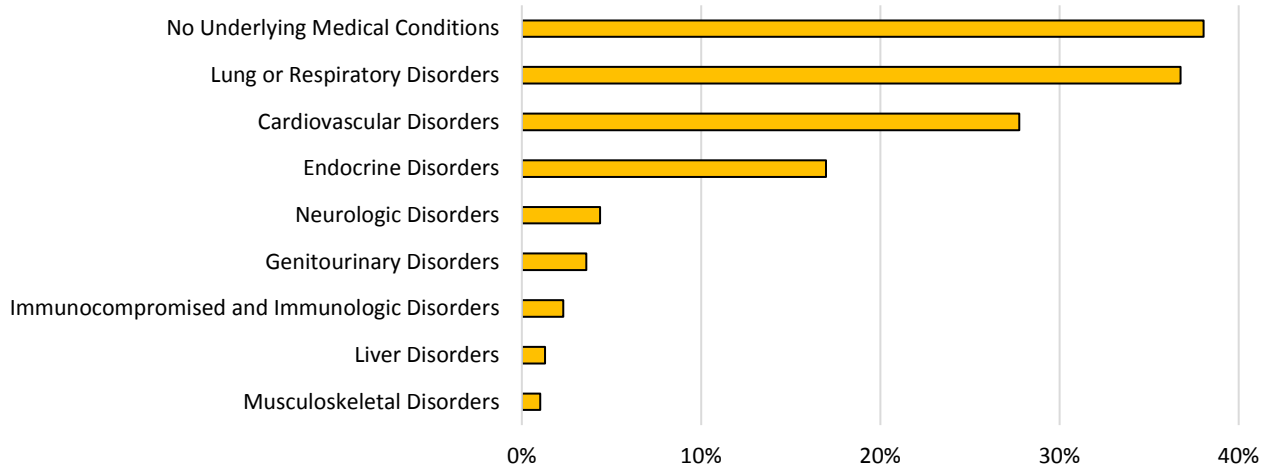
⁴ Severe illness includes cases who were hospitalized in intensive care or died as a result of their illness

Percentage of Fayette County COVID-19 Cases by Age Group



Data as of 10/14/2020

Underlying Health Conditions of Fayette County COVID-19 Cases



Genitourinary Disorders includes kidney stones

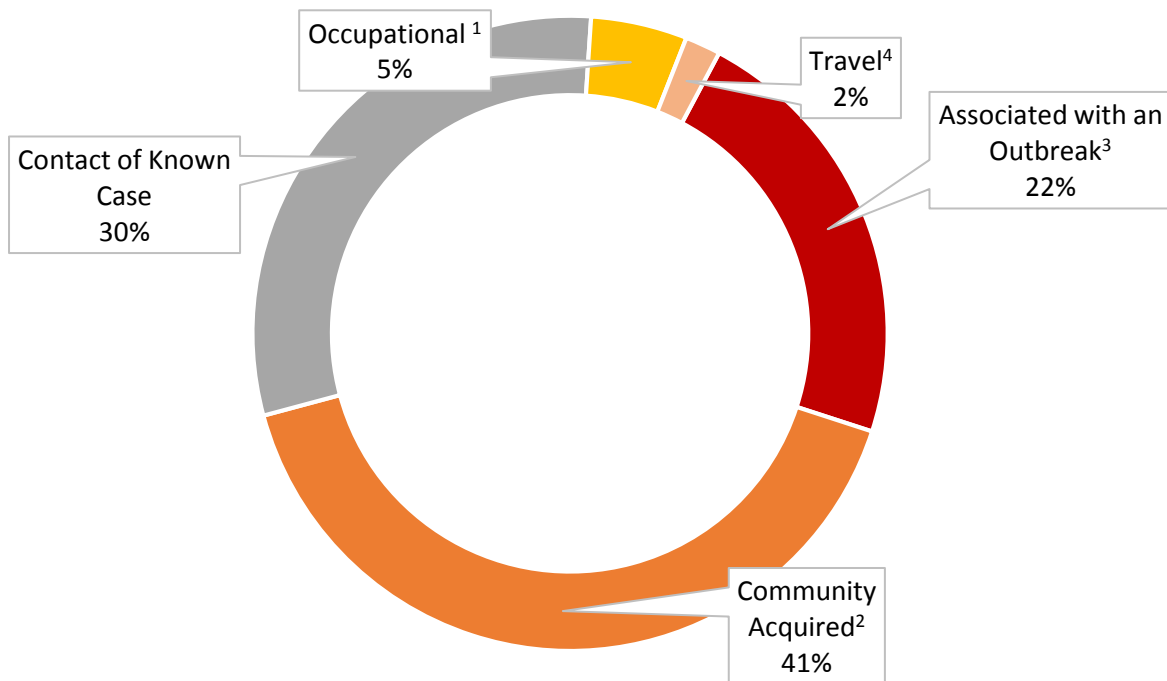
Endocrine Disorders include Graves' Disease and Diabetes

Musculoskeletal Disorders includes Fibromyalgia

Respiratory Disorders include chronic lung disease (Asthma/Emphysema/COPD/Bronchitis) and being a former or current smoker

Cardiovascular Disorders includes hypertension and arrhythmia

Fayette County COVID-19 Case Exposures



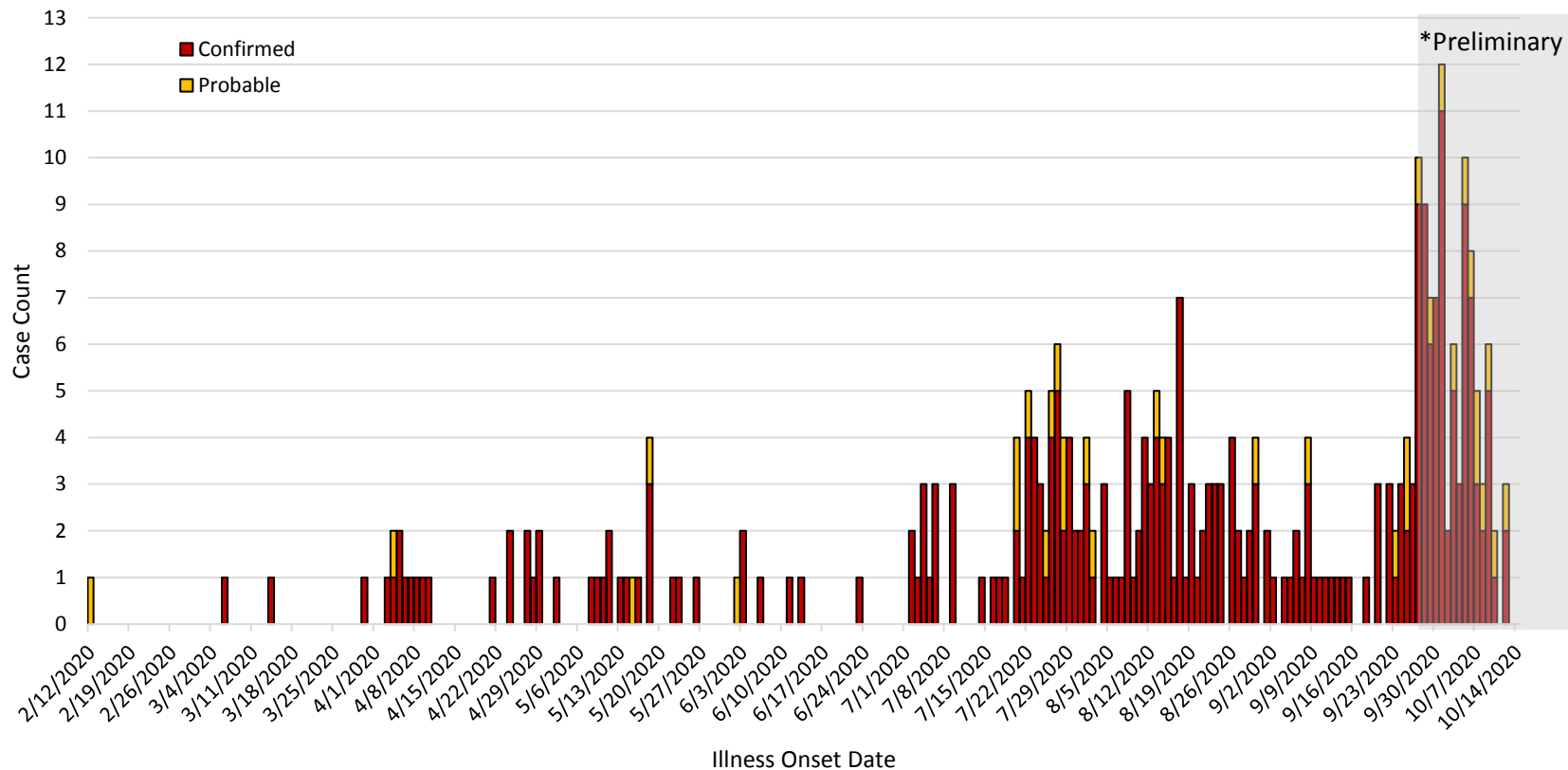
¹Occupational exposures include those working in the following settings: health care, first responder.

²Community acquired denotes unknown source of exposure.

³Associated with an Outbreak refers to two or more cases linked to a common source of exposure.

⁴Travel exposures are those due to travel both outside and within the state of Ohio.

Epidemiological Curve of Confirmed COVID-19 Cases¹ in Fayette County by Illness Onset Date



¹Cases for whom an illness onset date is not available are not illustrated. This may be due to the case not yet being interviewed or the case testing positive without experiencing any symptoms.

To be released from isolation a person must meet the following criteria:

1. Be fever free for at least 24 hours (no fever without the use medicine that reduces fevers)
-AND-
2. Have improvement of symptoms (for example, cough or shortness of breath have improved)
-AND-
3. At least 10 days have passed symptoms first began

For more information please visit: <https://www.cdc.gov/coronavirus/2019-ncov/if-you-are-sick/end-home-isolation.html>

Case Definitions:

Probable: includes the following:

1. Individuals experiencing symptoms of COVID-19 who have either traveled to an area experiencing community spread or who are a contact of a laboratory confirmed case
-OR-
2. Individuals with a positive antibody result via a test authorized by an FDA under an emergency use authorization and who either were a contact of a laboratory confirmed case or who experienced symptoms of COVID-19

Confirmed: individuals with laboratory confirmation of COVID-19

For more information please visit: https://cdn.ymaws.com/www.cste.org/resource/resmgr/2020ps/interim-20-id-01_covid-19.pdf

Recovered: individuals who are no longer experiencing symptoms or have had improvement of symptoms and who have been released from isolation



Public Health
Prevent. Promote. Protect.

Fayette County Public Health